

# CERTIFICATE OF LOCATION OF GOVERNMENT CORNER

SOUTH QUARTER Corner of Section 23, Township 105N, Range 40W, 5th P.M.

STATE OF MINNESOTA, County of MURRAY

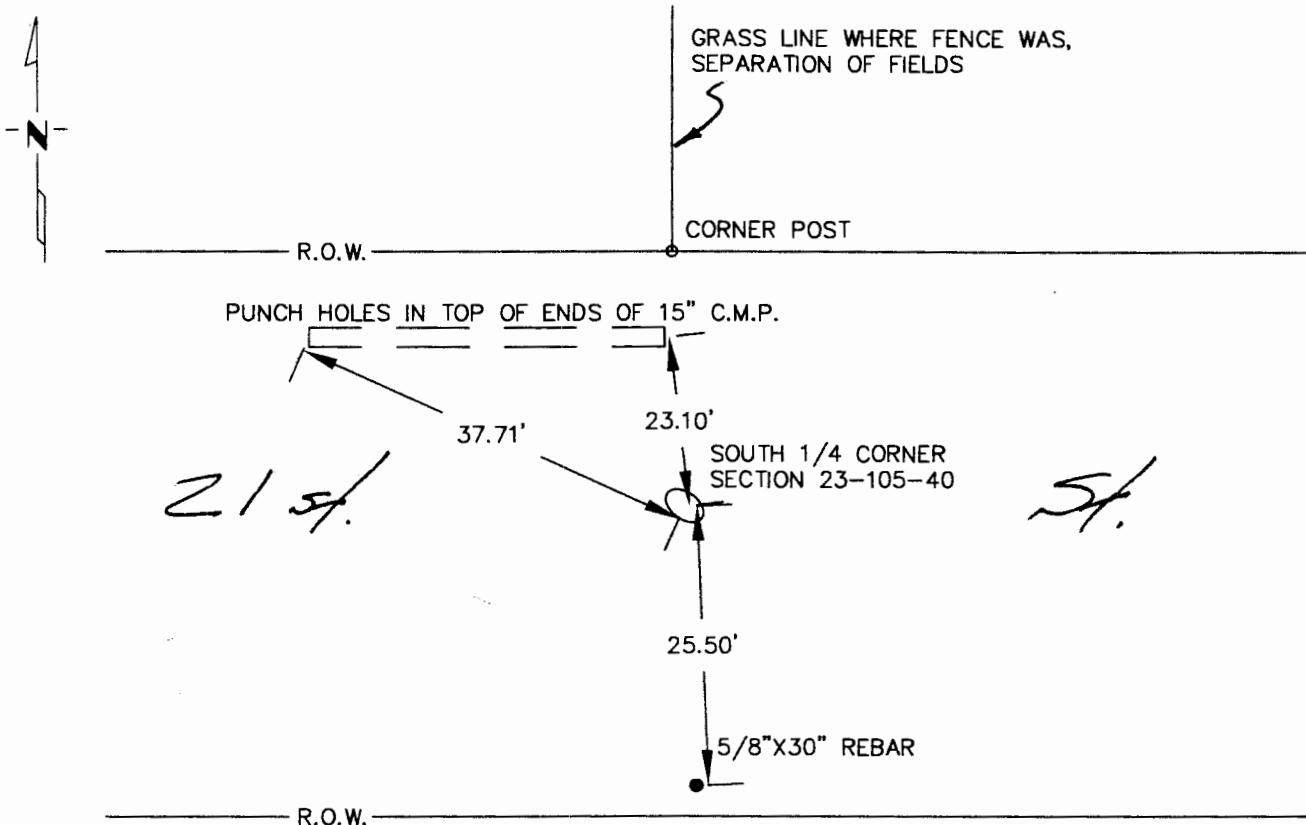
At the corner location shown on the sketch:

On 8-20-03 found a 5"X10" GREY STONE IN CL GRAVEL ROAD IN LINE WITH GRASS LINE NORTH, BETWEEN FIELDS

left monument as found,  lowered monument,  removed monument (explain)

On \_\_\_\_\_ placed a \_\_\_\_\_

### SKETCH OF REFERENCE TIES



Statement of evidence relative to this corner location is on back of page.

I hereby certify that this document and the data contained herein was prepared by me or under my direct supervision.

R. U. [Signature] 8/22/03  
SIGNATURE DATE

Registration No. 14330

Land Surveyor,  Professional Engineer

County Surveyor,  County Engineer

### OFFICE OF THE COUNTY RECORDER

County of \_\_\_\_\_

I hereby certify that this document was filed in the Co. Recorders office at \_\_\_\_\_ .M. on the \_\_\_\_\_ day of MAR 2 2004 A.D., 19 \_\_\_\_\_

County Recorder Janel Johnson

By \_\_\_\_\_, Deputy

DOCUMENT NO. \_\_\_\_\_